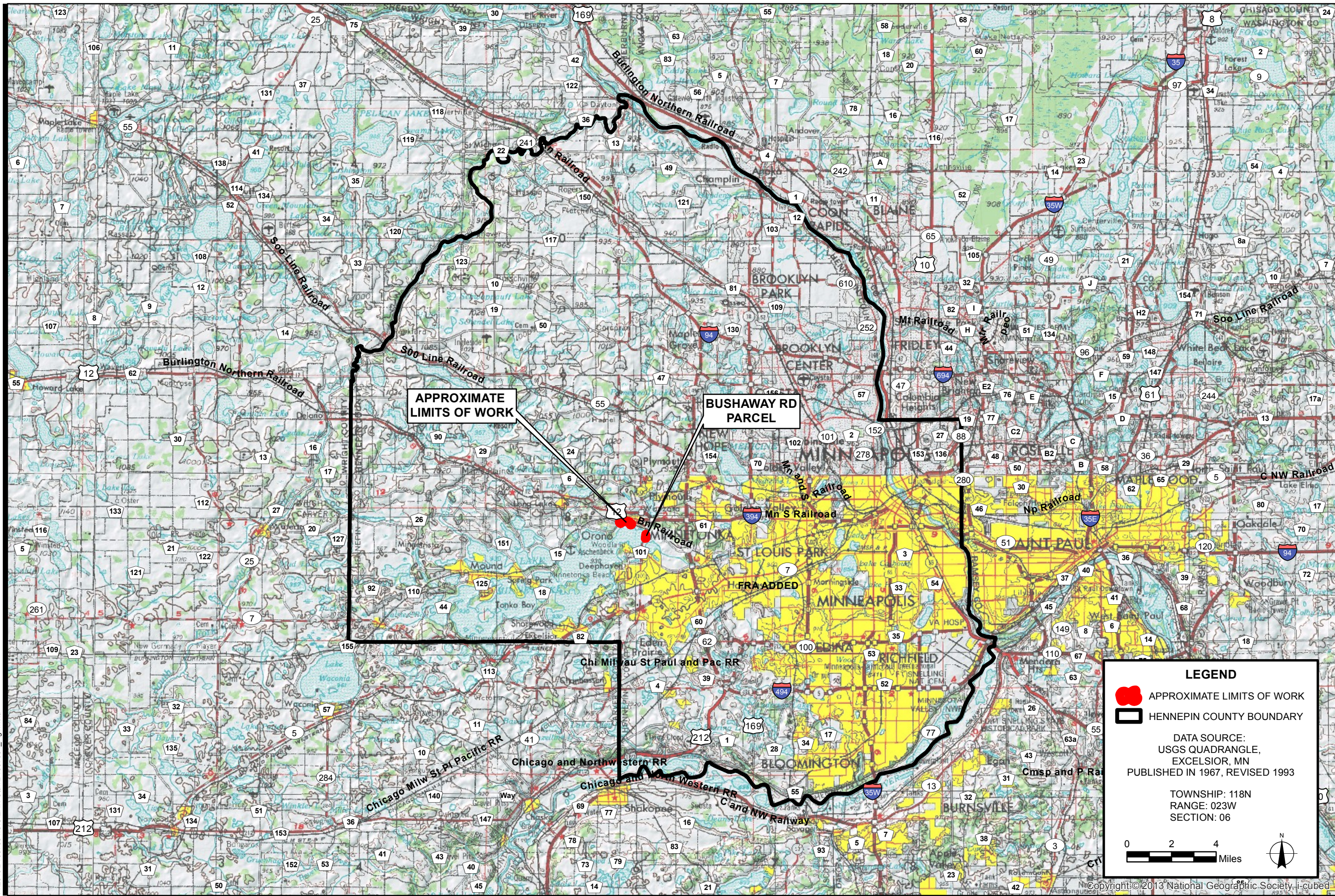


## Figures



APPROXIMATE  
LIMITS OF WORK

BUSHAWAY RD  
PARCEL

**LEGEND**

- APPROXIMATE LIMITS OF WORK
- HENNEPIN COUNTY BOUNDARY

DATA SOURCE:  
USGS QUADRANGLE,  
EXCELSIOR, MN  
PUBLISHED IN 1967, REVISED 1993

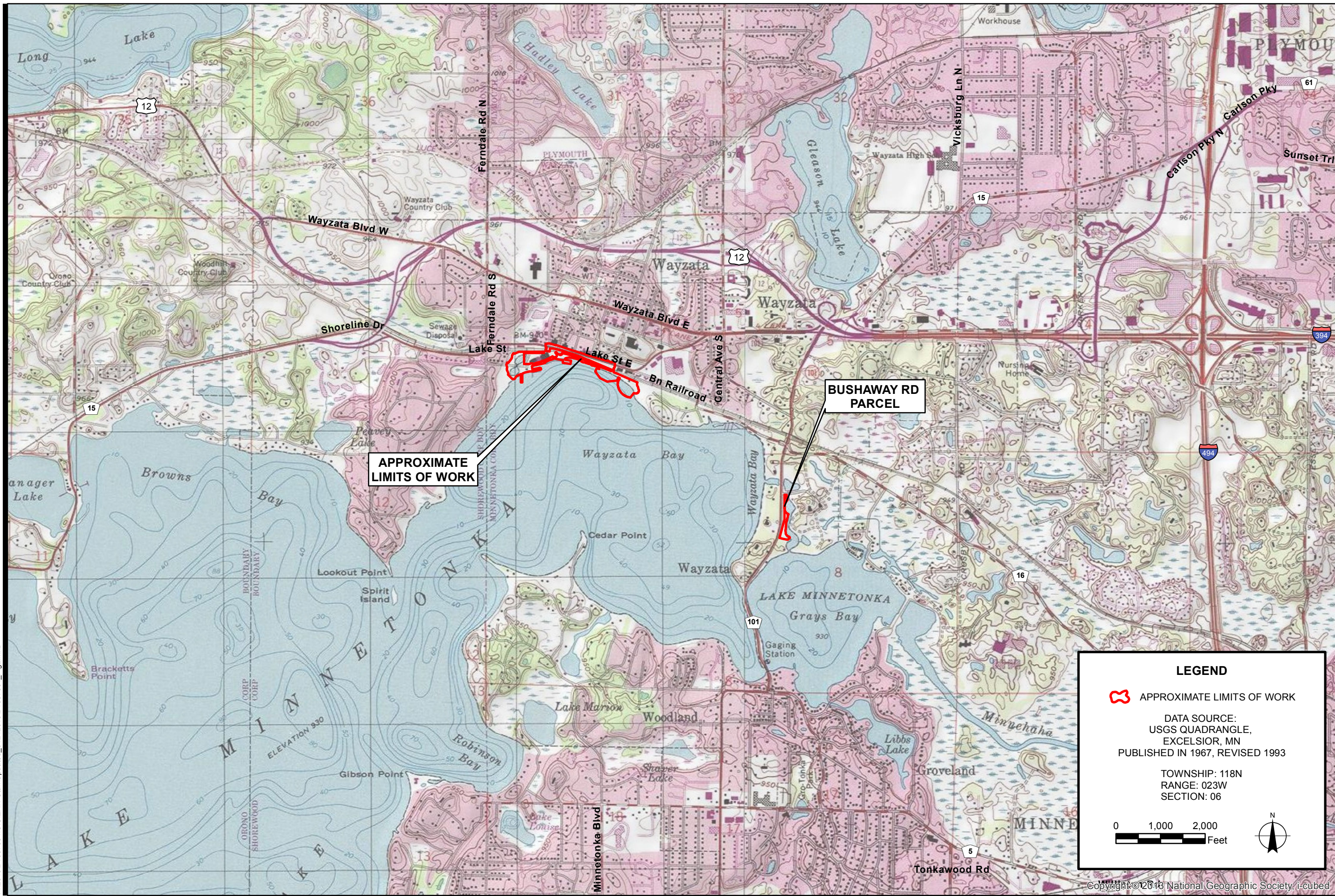
TOWNSHIP: 118N  
RANGE: 023W  
SECTION: 06

0 2 4 Miles

COUNTY LOCATION MAP  
WAYATA LAKE EFFECT  
WAYATA, MINNESOTA

Project No:	B1607634
Drawing No:	B1607634_Fig1
Scale:	1 in = 4 miles
Drawn By:	CMF
Date Drawn:	01/20/2017
Checked By:	JBW
Last Modified:	2/9/17
Sheet:	1 of 1
Fig:	1

F:\2016\B1607634\GIS\EA\W Stuffs\B1607634\_Fig1.mxd



**SITE LOCATION MAP**  
 WAYZATA LAKE EFFECT  
 WAYZATA, MINNESOTA

**LEGEND**

APPROXIMATE LIMITS OF WORK

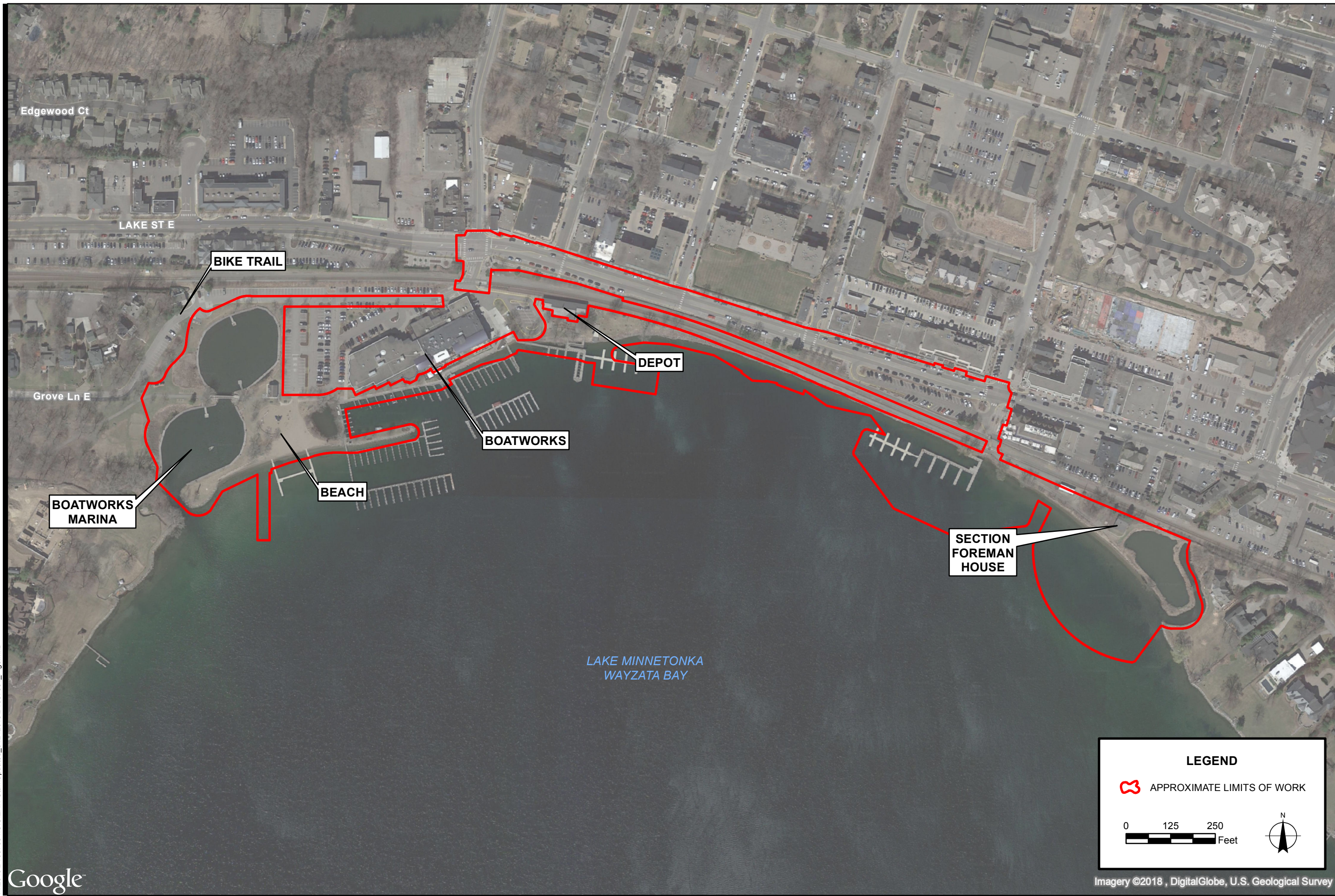
DATA SOURCE:  
 USGS QUADRANGLE,  
 EXCELSIOR, MN  
 PUBLISHED IN 1967, REVISED 1993

TOWNSHIP: 118N  
 RANGE: 023W  
 SECTION: 06

0 1,000 2,000 Feet


Project No:	B1607634
Drawing No:	B1607634_Fig2
Scale:	1 in = 2,000 ft
Drawn By:	CMF
Date Drawn:	01/20/2016
Checked By:	JBW
Last Modified:	1/24/18
Sheet:	1 of 1
Fig:	2


F:\2016\B1607634\GIS\EA\Stuff\Updated\_01242018\B1607634\_Fig2.mxd



EXISTING CONDITIONS  
WAYZATA LAKE EFFECT  
WAYZATA, MINNESOTA

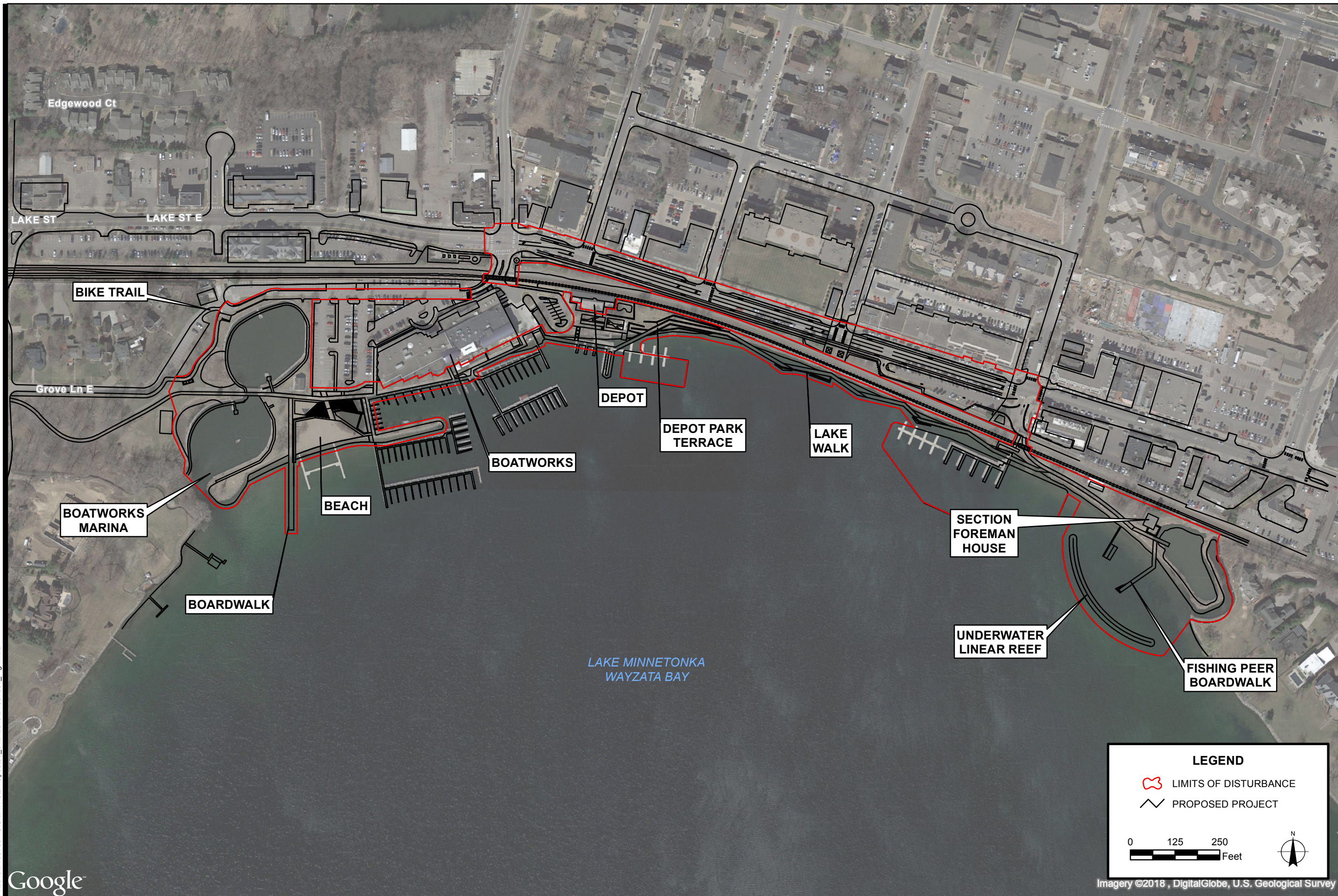
**LEGEND**

 APPROXIMATE LIMITS OF WORK

0 125 250 Feet 


Project No:	B1607634
Drawing No:	B1607634_Fig3
Scale:	1 in = 250 ft
Drawn By:	CMF
Date Drawn:	01/20/2017
Checked By:	JBW
Last Modified:	1/24/18
Sheet:	Fig.
1 of 1	3


F:\2016\B1607634\GIS\EA\ Stuff\Updated\_01242018\B1607634\_Fig3.mxd




**PROPOSED PROJECT POST-CONSTRUCTION**  
 WAYZATA LAKE EFFECT  
 WAYZATA, MINNESOTA

**LEGEND**

 LIMITS OF DISTURBANCE

 PROPOSED PROJECT

0 125 250 Feet



Project No:	B1607634
Drawing No:	B1607634_Fig4
Scale:	1 in = 250 ft
Drawn By:	CMF
Date Drawn:	01/20/2017
Checked By:	JBW
Last Modified:	1/24/18
Sheet:	1 of 1
Fig:	4

F:\2016\B1607634\GIS\EA\Stuff\Updated\_01242018\B1607634\_Fig4.mxd

**EXISTING CONDITIONS- BUSHAWAY ROAD PARCEL**  
WAYZATA LAKE EFFECT  
WAYZATA, MINNESOTA

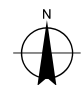


**LEGEND**

— PROPOSED PROJECT

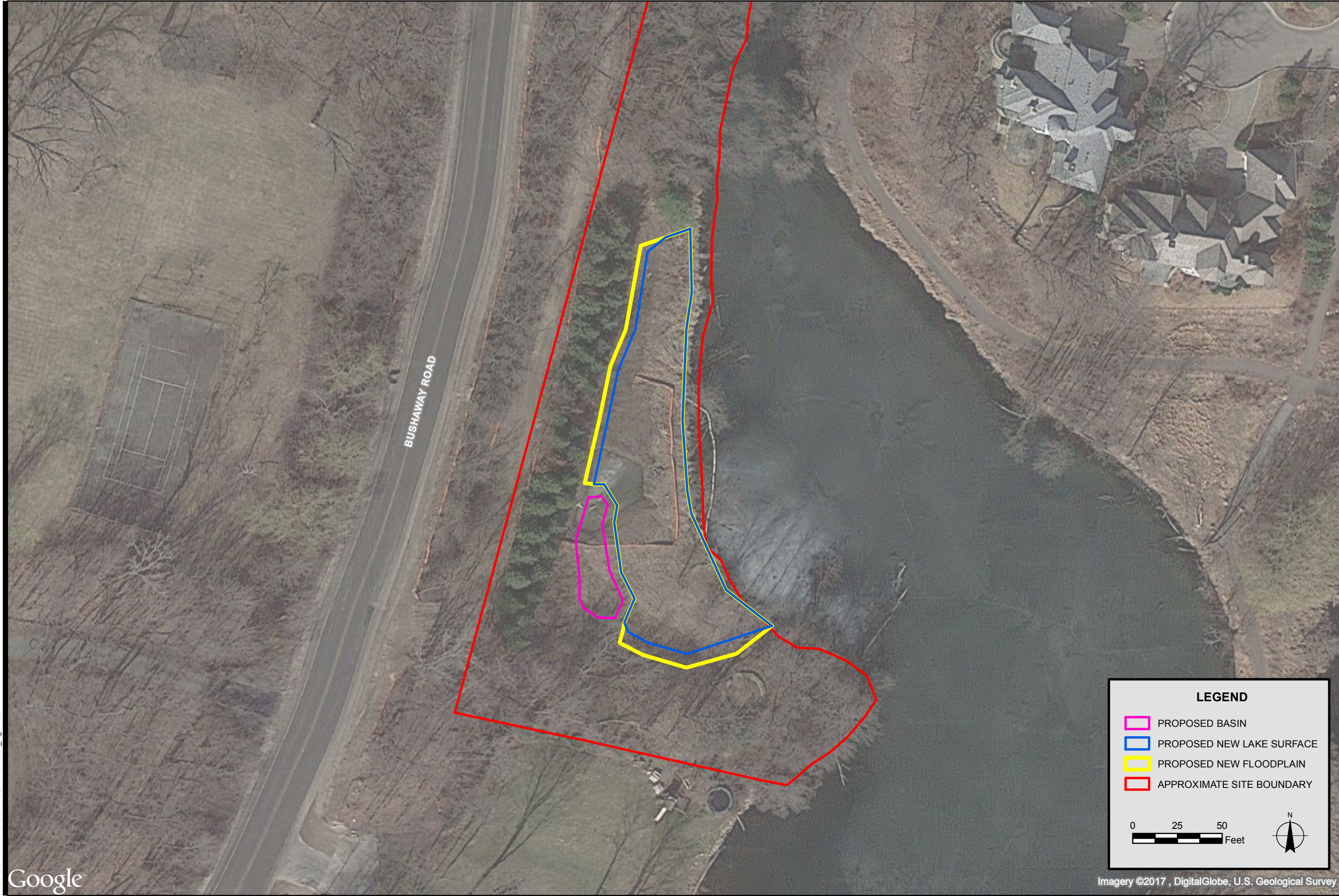
□ APPROXIMATE SITE BOUNDARY

0 100 200 Feet



Project No:	
B1607634	
Drawing No.	
B1607634_Fig5	
Scale: 1 in = 200 ft	
Drawn By: CMF	
Date Drawn: 01/20/2017	
Checked By: JBW	
Last Modified: 2/9/17	
Sheet:	Fig.
1 of 1	5

POST-CONSTRUCTION CONDITIONS - BUSHAWAY ROAD PARCEL  
WAYZATA LAKE EFFECT  
WAYZATA, MINNESOTA



**LEGEND**

- PROPOSED BASIN
- PROPOSED NEW LAKE SURFACE
- PROPOSED NEW FLOODPLAIN
- APPROXIMATE SITE BOUNDARY

0 25 50 Feet

Project No:	B1607634
Drawing No:	B1607634_Fig6
Scale:	1 in = 50 ft
Drawn By:	CMF
Date Drawn:	01/25/2017
Checked By:	JBW
Last Modified:	2/9/17
Sheet:	1 of 1
Fig.:	6

F:\2016\B1607634\GIS\EA\Stuff\B1607634\_Fig6.mxd



# Wayzata Lake Effect EAW

## Park Project Area - 1937 Aerial Photograph

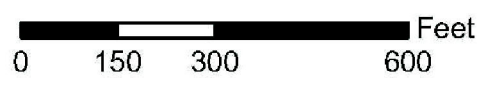
 Limits of Work

Data Sources:  
- Civitas site plan  
- 1937 aerial photograph

AES Project Number: 16-0549  
Date: 4/11/17  
File Name: Wayzata EAW\_1937 aerial\_2017-04-11



Applied Ecological Services, Inc.  
21938 Mushtown Road  
Prior Lake, MN 55372  
952-447-1919  
www.appliedeco.com

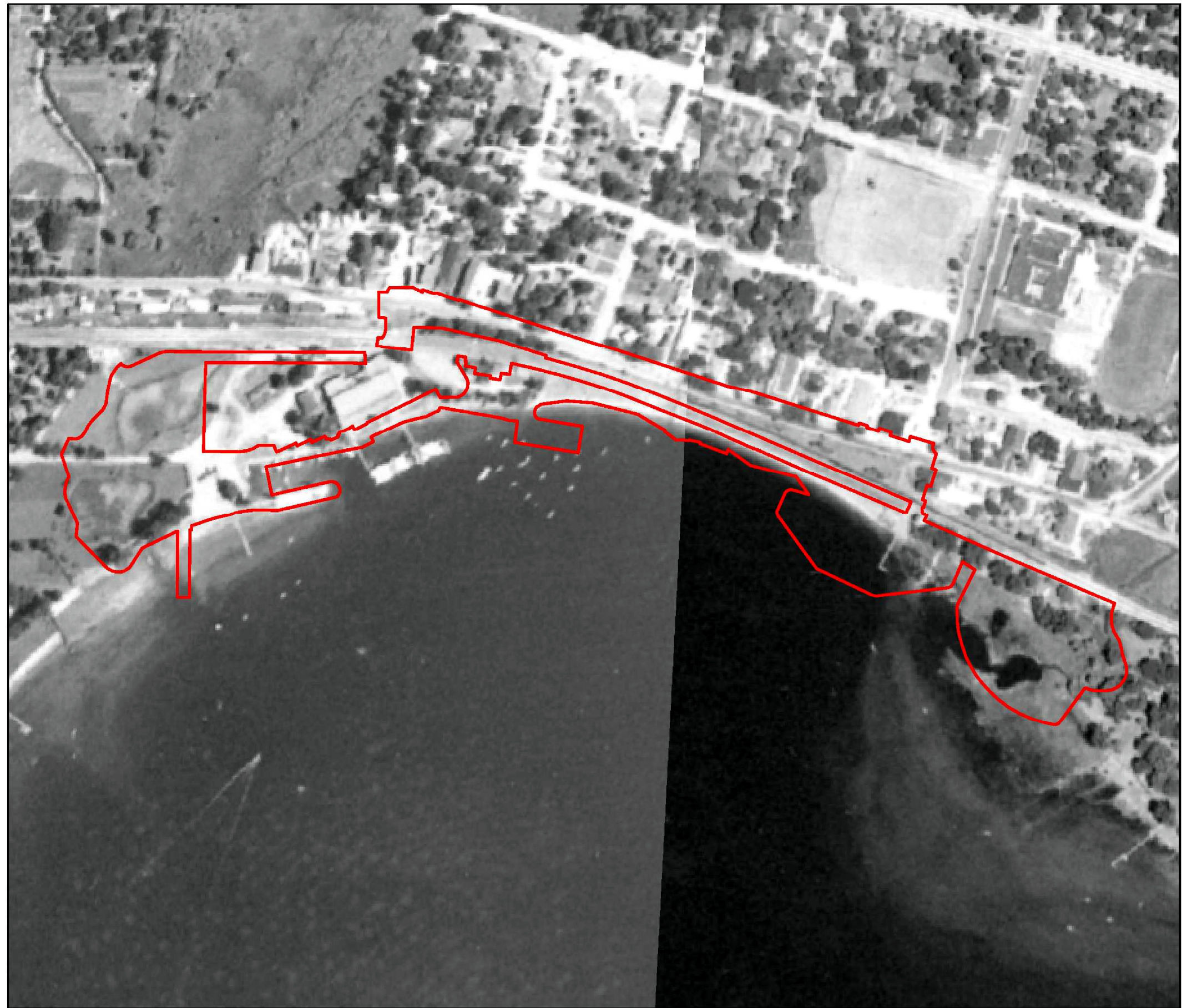


**BRAUN**  
**INTERTEC**  
11001 Hampshire Avenue S  
Minneapolis, MN 55438  
PH. (952) 995-2000  
FAX (952) 995-2020

PROPOSED PROJECT - 1937 AERIAL PHOTOGRAPH  
WAYZATA LAKE EFFECT  
WAYZATA, MINNESOTA

Project No:	B1607634
Drawing No.	B1607634_Fig7
Drawn By:	CMF
Date Drawn:	01/20/2017
Checked By:	JBW
Last Modified:	1/24/18
Sheet:	1 of 1
Fig.	7

F:\2016\B1607634\GIS\EAW Stuff\Updated\_01242018\B1607634\_Fig7.mxd



# Wayzata Lake Effect EAW

## Park Project Area - 1940 Aerial Photograph

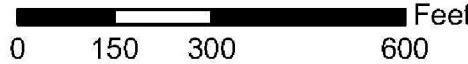
 Limits of Work

Data Sources:  
- Civitas site plan  
- 1940 aerial photograph

AES Project Number: 16-0549  
Date: 4/11/17  
File Name: Wayzata EAW\_1940 aerial\_2017-04-11



Applied Ecological Services, Inc.  
21938 Mushtown Road  
Prior Lake, MN 55372  
952-447-1919  
www.appliedeco.com

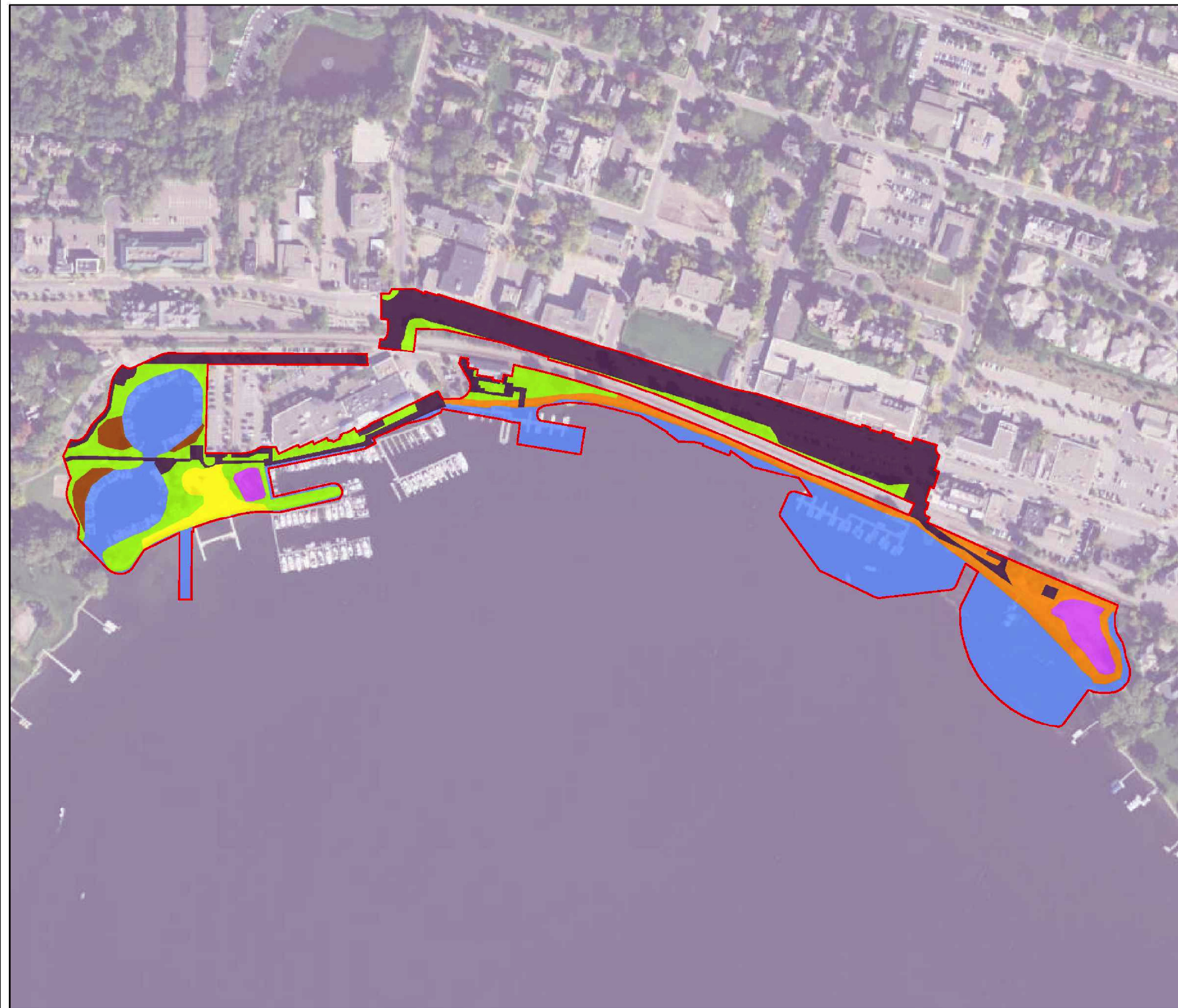


**BRAUN**  
**INTERTEC**  
11001 Hampshire Avenue S  
Minneapolis, MN 55438  
PH. (952) 995-2000  
FAX (952) 995-2020

PROPOSED PROJECT - 1940 AERIAL PHOTOGRAPH  
WAYZATA LAKE EFFECT  
WAYZATA, MINNESOTA

Project No:	B1607634
Drawing No.	B1607634_Fig8
Drawn By:	CMF
Date Drawn:	01/20/2017
Checked By:	JBW
Last Modified:	1/24/18
Sheet:	1 of 1
Fig.	8

F:\2016\B1607634\GIS\EAW Stuff\Updated\_01242018\B1607634\_Fig8.mxd



# Wayzata Lake Effect EAW

## Park Project Area - Existing Land Cover

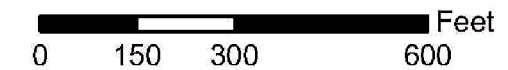
- Limits of Work
- Existing Land Cover**
- Littoral (Lakeshore) Wetland
- Invasive Cattail Marsh
- Brush/Grassland
- Lawn/Landscaping
- Impervious Surface
- Stormwater Pond
- Sand Beach

Data Sources:  
- Civitas site plan  
- LMIC WMS server (2015 aerial)

AES Project Number: 16-0549  
Date: 4/11/17  
File Name: Wayzata EAW\_exist lc\_2017-04-11



Applied Ecological Services, Inc.  
21938 Mushtown Road  
Prior Lake, MN 55372  
952-447-1919  
www.appliedeco.com



PROPOSED PROJECT AREA - EXISTING LAND COVER  
WAYZATA LAKE EFFECT  
WAYZATA, MINNESOTA

Project No:	
B1607634	
Drawing No.	
B1607634_Fig9	
Drawn By:	
CMF	
Date Drawn:	
01/20/2017	
Checked By:	
JBW	
Last Modified:	
1/24/18	
Sheet:	Fig.
1 of 1	9



# Wayzata Lake Effect EAW

## Park Project Area - Proposed Land Cover

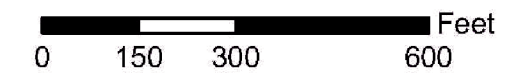
- Limits of Work
- Proposed Land Cover**
- Littoral (Lakeshore) Wetland
- Shoreline Marsh
- Invasive Cattail Marsh
- Brush/Grassland
- Lawn/Landscaping
- Impervious Surface
- Stormwater Pond
- Sand Beach

Data Sources:  
- Civitas site plan  
- LMIC WMS server (2015 aerial)

AES Project Number: 16-0549  
Date: 4/11/17  
File Name: Wayzata EAW\_prop lc\_2017-04-11

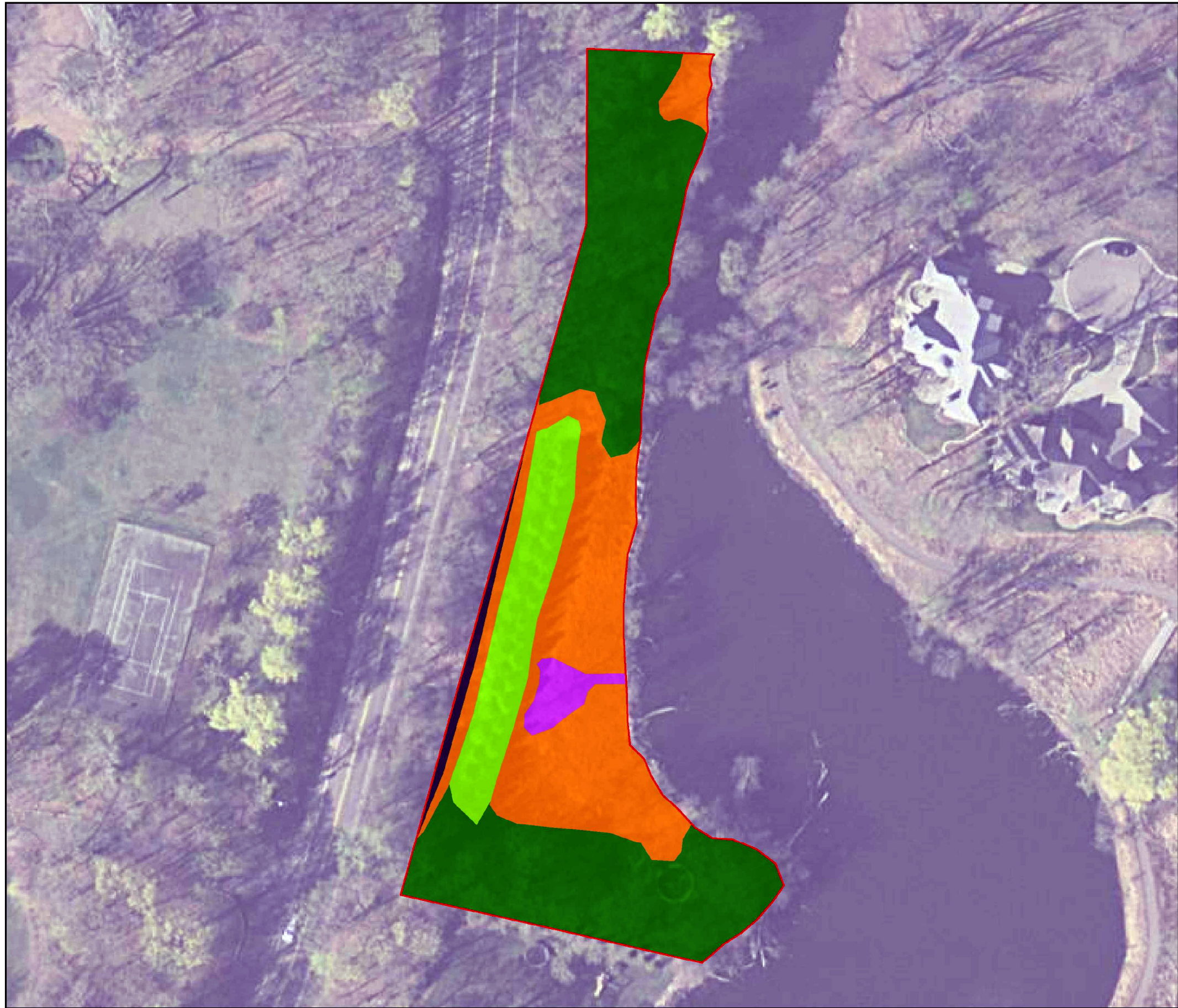


Applied Ecological Services, Inc.  
21938 Mushtown Road  
Prior Lake, MN 55372  
952-447-1919  
www.appliedeco.com



PROPOSED PROJECT AREA - PROPOSED LAND COVER  
WAYZATA LAKE EFFECT  
WAYZATA, MINNESOTA

Project No:	B1607634
Drawing No:	B1607634_Fig10
Drawn By:	CMF
Date Drawn:	01/20/2017
Checked By:	JBW
Last Modified:	1/24/18
Sheet:	1 of 1
Fig:	10



# Wayzata Lake Effect EAW

## Bushaway Road Parcel - Existing Land Cover

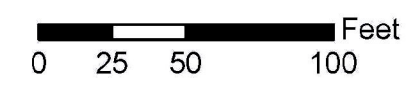
- Limits of Work
- Existing Land Cover**
- Wooded/Forest
- Brush/Grassland
- Lawn/Landscaping
- Impervious Surface
- Stormwater Pond

Data Sources:  
- LMIC WMS server (2012 aerial)

AES Project Number: 16-0549  
Date: 1/4/17  
File Name: Wayzata EAW\_bush\_exist lc\_2017-01-04



Applied Ecological Services, Inc.  
21938 Mushtown Road  
Prior Lake, MN 55372  
952-447-1919  
www.appliedeco.com



BUSHAWAY ROAD PARCEL EXISTING LAND COVER  
 WAYZATA LAKE EFFECT  
 WAYZATA, MINNESOTA

Project No:	
B1607634	
Drawing No.	
B1607634_Fig11	
Drawn By:	
CMF	
Date Drawn:	
01/20/2017	
Checked By:	
JBW	
Last Modified:	
2/9/17	
Sheet:	Fig.
1 of 1	11



# Wayzata Lake Effect EAW

## Bushaway Road Parcel - Proposed Land Cover

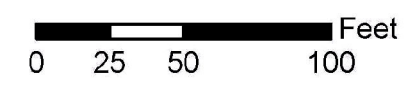
- Limits of Work
- Proposed Land Cover**
- Wooded/Forest
- Littoral (Lakeshore) Wetland
- Brush/Grassland
- Lawn/Landscaping
- Impervious Surface
- Stormwater Pond

Data Sources:  
- LMIC WMS server (2012 aerial)

AES Project Number: 16-0549  
Date: 1/4/17  
File Name: Wayzata EAW\_bush\_prop lc\_2017-01-04

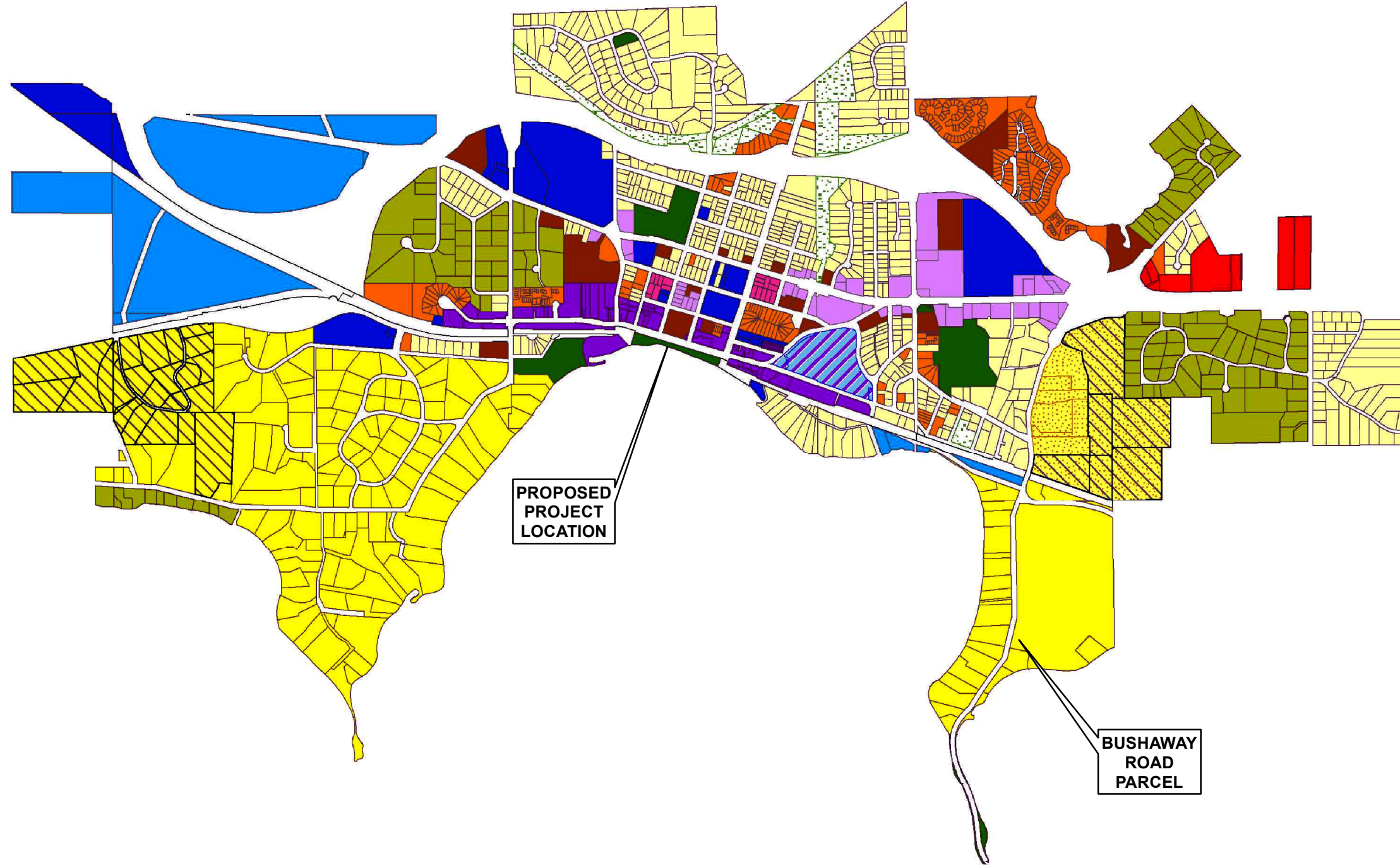


Applied Ecological Services, Inc.  
21938 Mushtown Road  
Prior Lake, MN 55372  
952-447-1919  
www.appliedeco.com



**BUSHAWAY ROAD PARCEL PROPOSED LAND COVER**  
 WAYZATA LAKE EFFECT  
 WAYZATA, MINNESOTA

Project No:	B1607634
Drawing No.	B1607634_Fig12
Drawn By:	CMF
Date Drawn:	01/20/2017
Checked By:	JBW
Last Modified:	2/9/17
Sheet:	Fig.
1 of 1	12

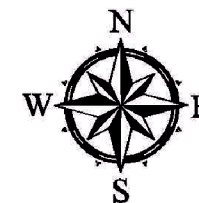


2030 COMPREHENSIVE PLAN, REDEVELOPMENT SITES MAP 3.5  
WAYZATA LAKE EFFECT  
WAYZATA, MINNESOTA

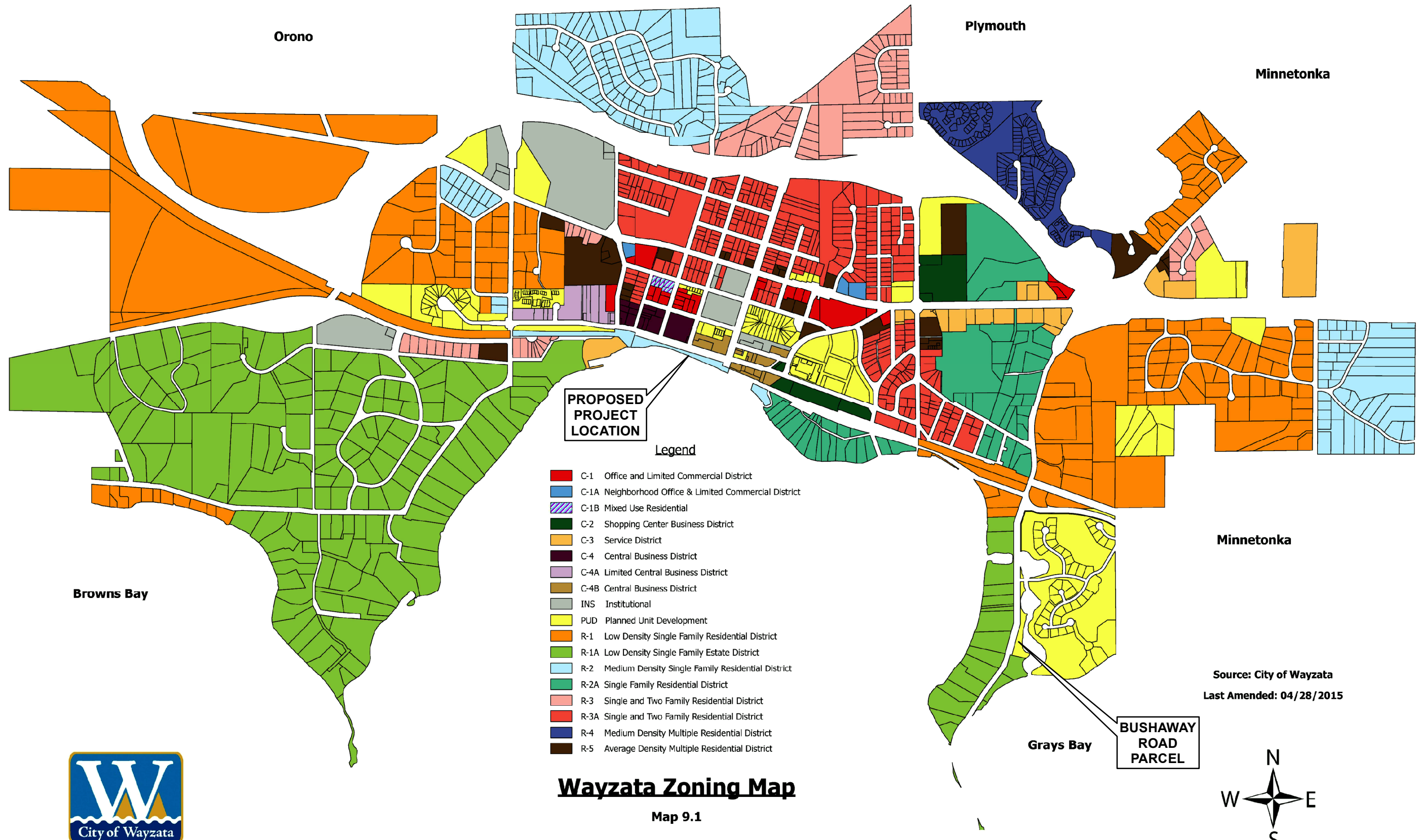


# Proposed Land Use Map

## Map 3.2



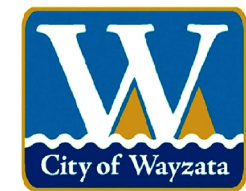
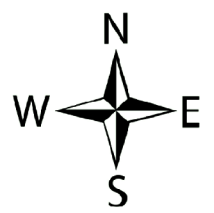
Project No:	B1607634
Drawing No.	B1607634_Fig13
Drawn By:	CMF
Date Drawn:	01/20/2017
Checked By:	JBW
Last Modified:	2/9/17
Sheet:	1 of 1
Fig:	13



# Wayzata Zoning Map

Map 9.1

Source: City of Wayzata  
Last Amended: 04/28/2015



ZONING MAP  
WAYZATA LAKE EFFECT  
WAYZATA, MINNESOTA

Project No:	B1607634
Drawing No:	B1607634_Fig14
Drawn By:	CMF
Date Drawn:	01/20/2017
Checked By:	JBW
Last Modified:	2/9/17
Sheet:	1 of 1
Fig:	34

F:\2016\B1607634\GIS\EA\W Stuffs\B1607634\_Fig14.mxd



**LEGEND**

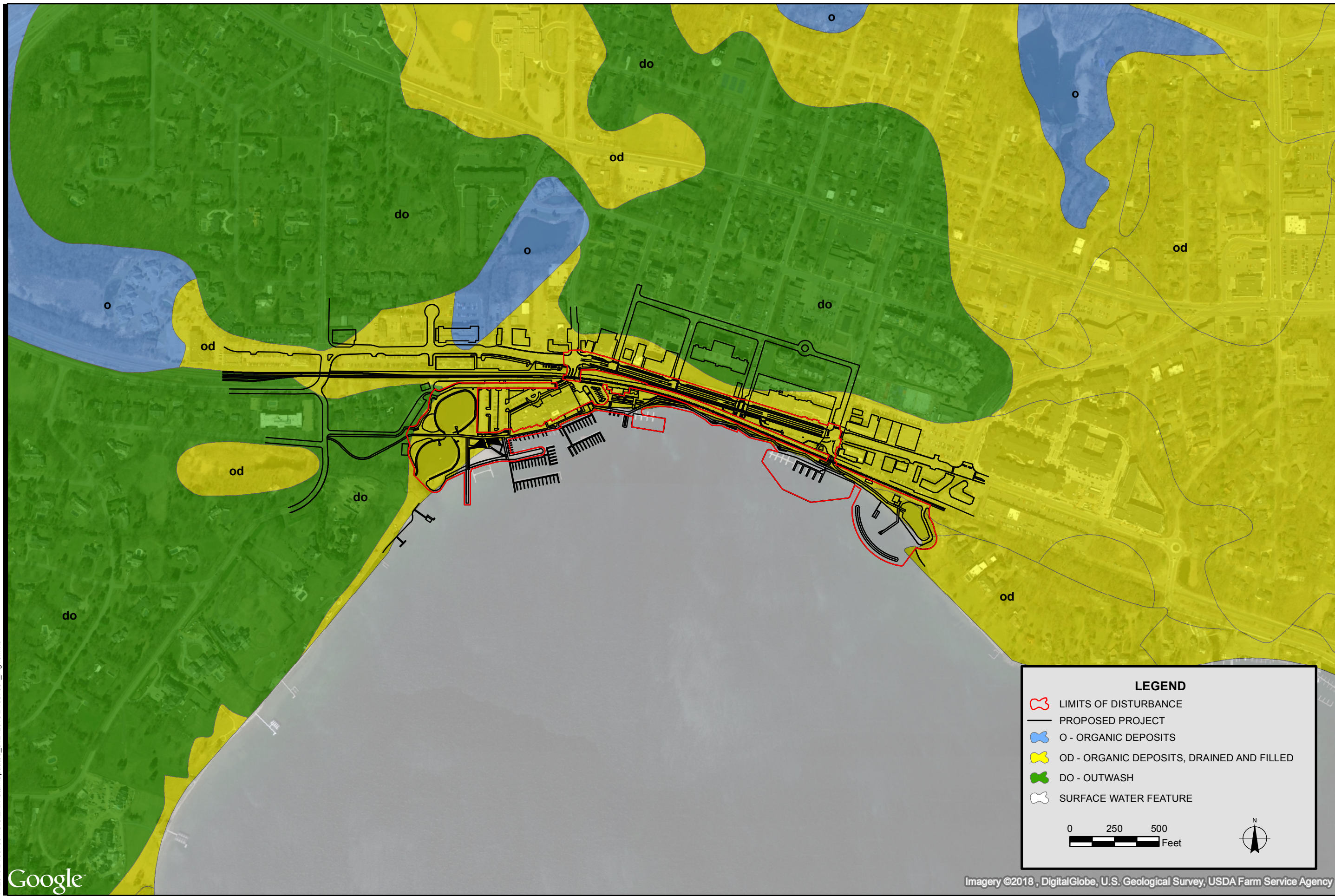
- LIMITS OF DISTURBANCE
- PROPOSED PROJECT
- OSP - ST PETER SANDSTONE
- OPC - PRAIRIE DU CHIEN GROUP

0 250 500 Feet

Project No:	
B1607634	
Drawing No.	
B1607634_Fig15	
Scale:	
Drawn By:	CMF
Date Drawn:	01/24/2017
Checked By:	JBW
Last Modified:	1/24/18
Sheet:	Fig.
1 of 1	15

F:\2016\B1607634\GIS\EA\ Stuff\Updated\_01242018\B1607634\_Fig15.mxd

**SURFICIAL GEOLOGY**  
WAYZATA LAKE EFFECT  
WAYZATA, MINNESOTA



**LEGEND**

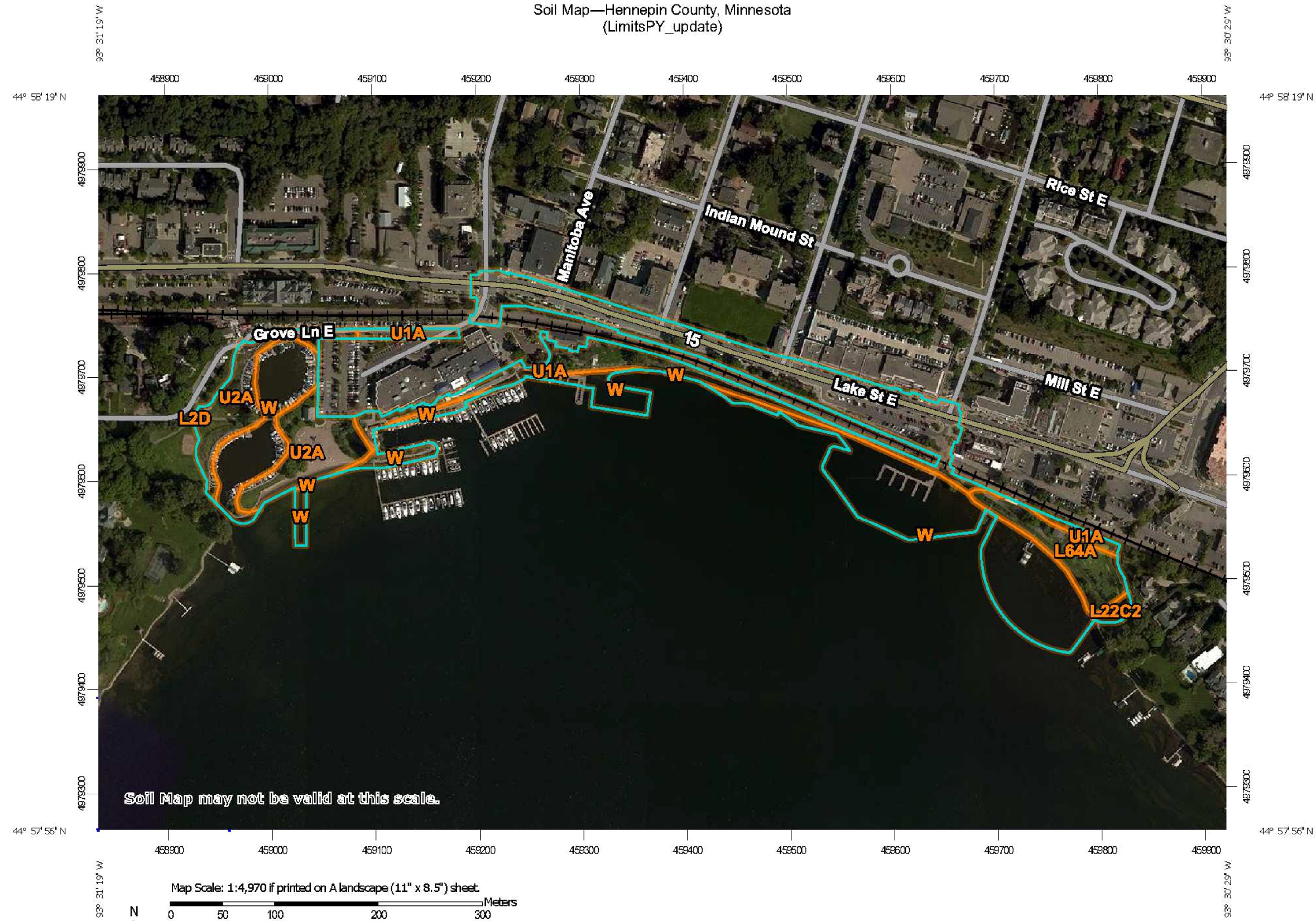
- LIMITS OF DISTURBANCE
- PROPOSED PROJECT
- O - ORGANIC DEPOSITS
- OD - ORGANIC DEPOSITS, DRAINED AND FILLED
- DO - OUTWASH
- SURFACE WATER FEATURE

0 250 500 Feet

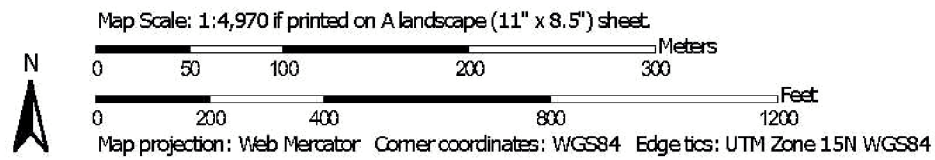
Project No:	B1607634
Drawing No:	B1607634_Fig16
Scale:	1 in = 500 ft
Drawn By:	CMF
Date Drawn:	01/24/2017
Checked By:	JBW
Last Modified:	1/24/18
Sheet:	Fig.
1 of 1	16

F:\2016\B1607634\GIS\EA\ Stuff\Updated\_01242018\B1607634\_Fig16.mxd

Soil Map—Hennepin County, Minnesota  
 (LimitsPY\_update)



Soil Map may not be valid at this scale.

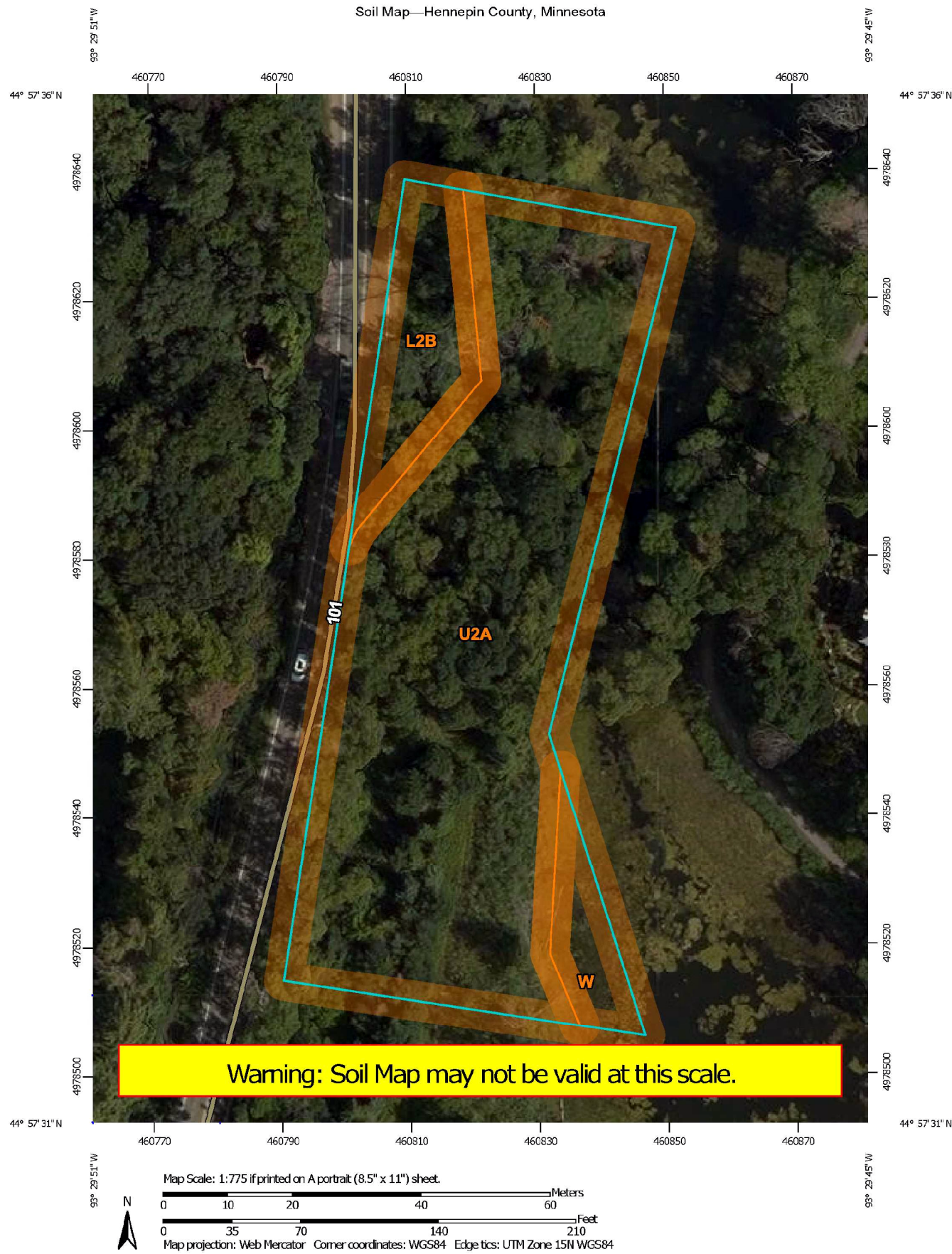


Web Soil Survey  
 National Cooperative Soil Survey

1/24/2018  
 Page 1 of 3

SOIL SURVEY - PROPOSED PROJECT  
 WAYZATA LAKE EFFECT  
 WAYZATA, MINNESOTA

Project No:	B1607634
Drawing No.	B1607634_Fig17
Drawn By:	CMF
Date Drawn:	01/20/2017
Checked By:	JBW
Last Modified:	1/24/18
Sheet:	Fig.
1 of 1	17



**SOIL SURVEY - BUSHAWAY ROAD PARCEL**  
WAYZATA LAKE EFFECT  
WAYZATA, MINNESOTA

Project No:	
B1607634	
Drawing No.	
B1607634_Fig18	
Drawn By:	
CMF	
Date Drawn:	
01/20/2017	
Checked By:	
JBW	
Last Modified:	
2/9/17	
Sheet:	Fig.
1 of 1	18