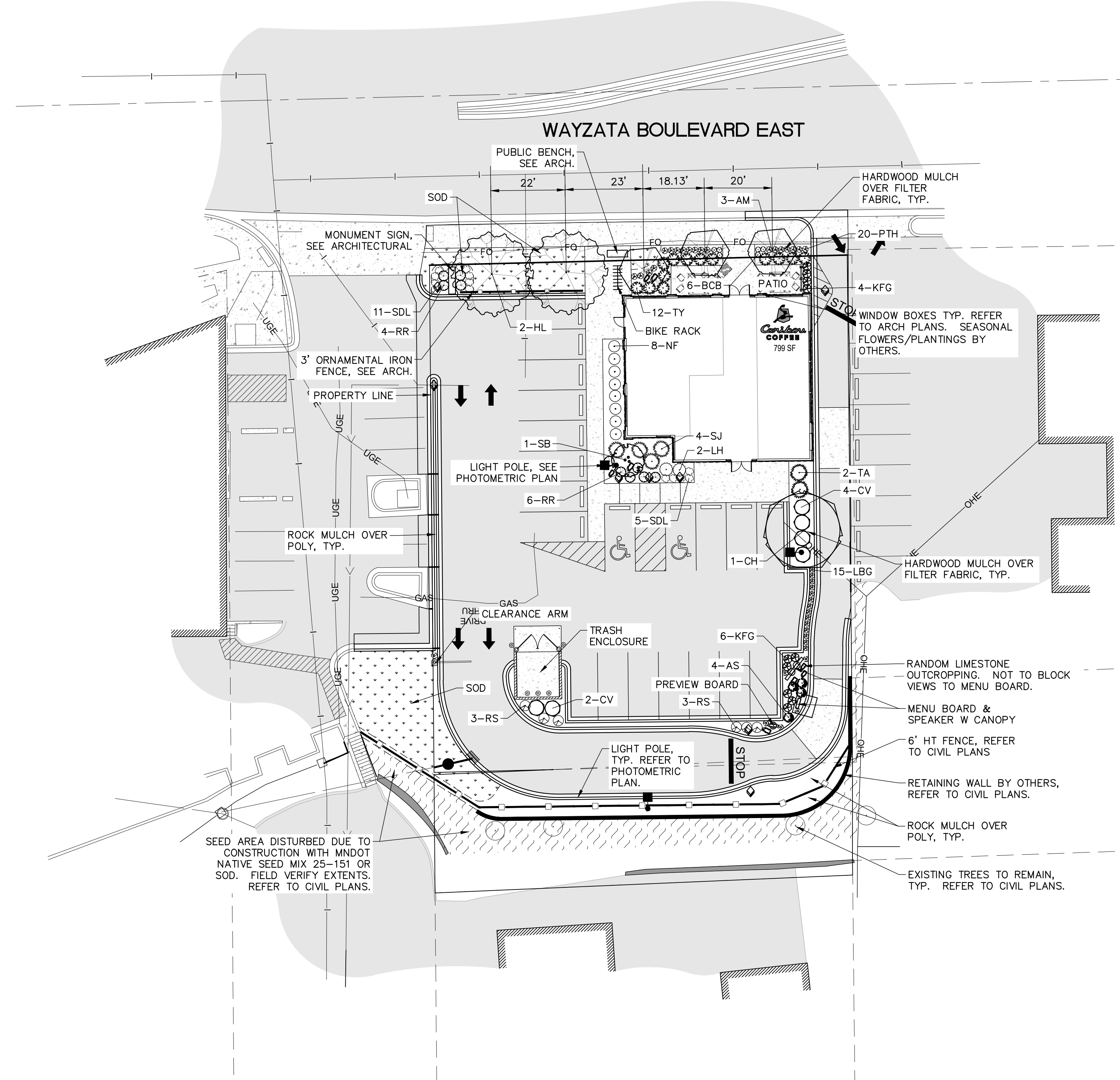


C:\MALEAH\CARIBOU\WAYZATA, MN\LANDSCAPE PLAN\WAYZATA-LANDSCAPE PLAN-24X36.DWG. ### 2/18/2022



LANDSCAPE SCHEDULE:

	KEY	COMMON NAME	SCIENTIFIC NAME	SIZE / ROOT TYPE	NOTES
DECIDUOUS TREES					
1	CH	Common Hackberry	Celtis occidentalis	2.5" cal. B&B	Straight Trunk, No V-Crotch
2	HL	Imperial Honeylocust	Gleditsia triacanthos var. inermis	3" cal. B&B	Straight Trunk, No V-Crotch
3	RM	Armstrong Maple	Acer rubrum 'Armstrong'	3" cal. B&B	Straight Trunk, No V-Crotch
6	TOTAL				
ORNAMENTAL TREES					
1	SB	Autumn Brilliance	Amelanchier x grndiflora	1.5" cal. B&B	Clump Form
1	TOTAL				
SHRUBS					
2	LH	Little Lime Hydrangea	Hydrangea paniculata 'Jane'	5 gal. cont.	Min. 5 canes at ht. spec.
4	AS	Alpine Spiraea	Spiraea japonica 'Alpina'	3 gal. cont.	Min. 5 canes at ht. spec.
8	NF	Neon Flash Spiraea	Spiraea japonica 'Neon Flash'	5 gal. cont.	Min. 5 canes at ht. spec.
10	RR	Carefree Wonder Shrub Rose	Rosa 'Elpita'	3 gal. cont.	Min. 5 canes at ht. spec.
6	RA	Russian Sage	Perovskia atriplicifolia	2 gal. cont.	Min. 5 canes at ht. spec.
6	CV	Compact European Viburnum	Viburnum opulus 'Compactum'	5 gal. cont.	Min. 5 canes at ht. spec.
4	SJ	Scandia Juniper	Juniperus sabina 'Scandia'	5 gal. cont.	Min. 5 canes at ht. spec.
2	TA	Technito Arborvitae	Thuja occidentalis 'Balljohn'	4' ht. pot	Min. 5 canes at ht. spec.
13	TY	Taunton Yew	Taxus x media 'Taunton'	5 gal. cont.	Min. 5 canes at ht. spec.
55	TOTAL				
PERENNIALS & ORNAMENTAL GRASSES					
16	SDL	Stella De Oro Daylily	Hemerocallis 'Stella de Oro'	1 gal. cont.	
6	BCG	Biokovo Geranium	Geranium x cantabrigiense 'Biokovo'	1 gal. cont.	
19	PTH	Patriot Hosta	Hosta 'Patriot'	1 gal. cont.	
15	LBG	Little Bluestem Grass	Schizachyrium scoparium (Little Bluestem)	1 gal. cont.	
10	KFG	Karl Foerster Grass	C. x acutiflora 'Karl Foerster'	1 gal. cont.	
66	TOTAL				

LANDSCAPE REQUIREMENTS

PER CITY OF WAYZATA - LANDSCAPE ORDINANCE

SEC. 2.8.5. LANDSCAPING- ALL DISTRICTS:

- STREET TREES:
 - TREES MIN SIZE OF 3" CALIPER
 - MAX SPACING OF TREES 26'
 - TREES SHALL BE LOCATED IN BOULEVARD OR TREE WELL 6' WIDE
 - STREET TREES AT HENNEPIN COUNTY ROW SHALL BE LOCATED BETWEEN THE BUILDING AND SIDEWALK.
- TRELLISED VINES TO COVER WALLS WITH MORE THAN 100 SF OF UNINTERRUPTED SURFACE AREA

SEC. 918.03 - REQUIRED FENCE, SCREENING AND LANDSCAPING:

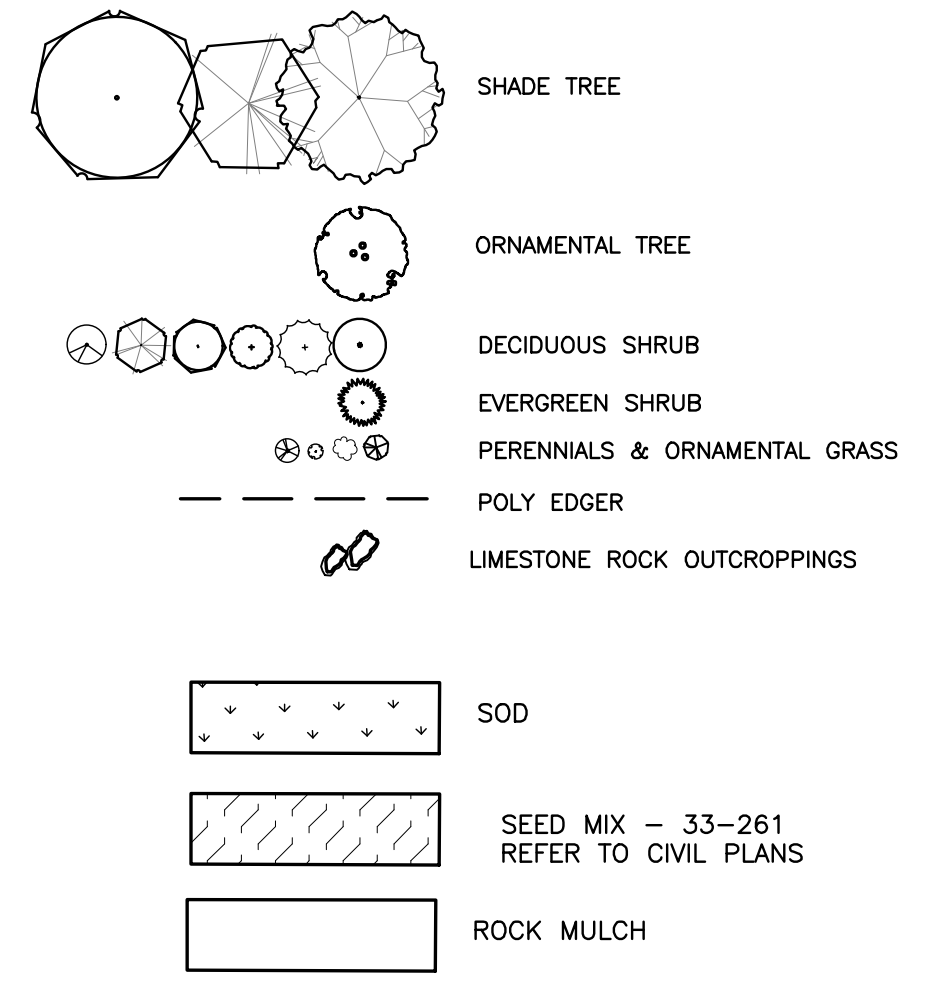
- FENCING & SCREENING WHERE ANY NON RESIDENTIAL USE ABUTS PROPERTY ZONED FOR RESIDENTIAL USE SHALL CONSIST OF EITHER A FENCE OR A GREEN BELT PLANNING STRIP.

SITE DATA:

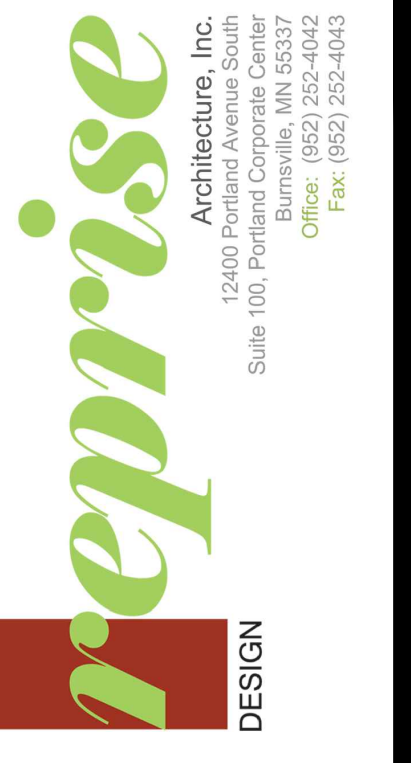
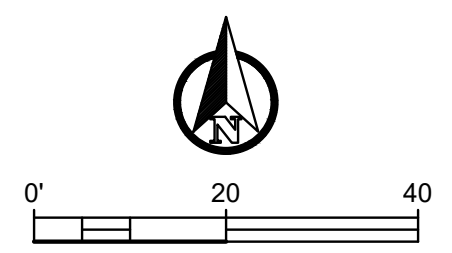
STREET FRONTAGE: 123.63 LF

	REQ	PROVIDED
STREET TREE: 123.63 LF / 26 = 4.75	5	5
FENCE - 6' HT	6' HT	6' HT

LANDSCAPE LEGEND:



Know what's below.
Call before you dig.
Dial 811



I hereby certify that this plan, specification, or report was prepared by me or under my direct supervision and that I am a duly licensed professional landscape architect under the laws of the State of Minnesota.

MALEAH W. FLA License No. 19507

Do NOT FOR CONSTRUCTION

WAYZATA BLVD RETAIL

MULTI-TENANT RETAIL BUILDING REMODEL
1022 WAYZATA BLVD. E, WAYZATA MN 55391

LANDSCAPE PLAN

DATE ISSUED

SITE PLAN APPROVAL 02-18-2022

DRAWN BY MM

CHECKED BY MM

JOB NO. 21429

PROJECT LOCATION:

WAYZATA, MN